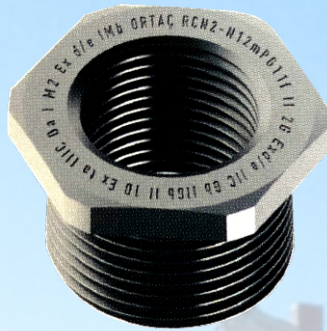


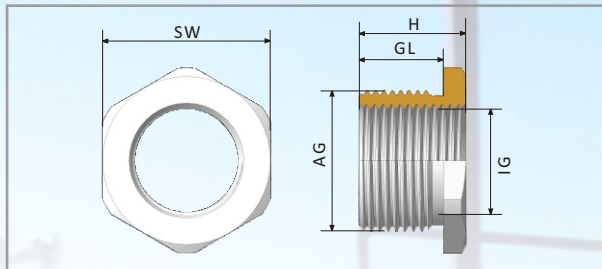
REDUCER



KRC SERIES

TECHNICAL DETAILS

Type	: KRC TYPE REDUCER
Protection code	: I M2 Ex db I Mb / I M2 Ex eb I Mb II 2G Ex db IIC Gb / II 2G Ex eb IIC Gb II 1D Ex ta IIIC Da
Certificate	: IEP 20 ATEX 756 U
Material	: MS58 Brass with nickel plated Stainless steel AISI316L / Aluminium
Standards	: EN 60079-0:2012, 60079-7:2007, 60079-1:2007 60079-31:2009
O-ring	: Silicone
Protection class	: IP66
Temperature	: -40 °C +100 °C
Application area	: ZONE1, ZONE2, ZONE21, ZONE22, Gas Group IIA, IIB, IIC



PRODUCT DEFINITION

K	RC	X	X	Xm	Xf
Brand	Series	Material Type	Seal type	Product Size(Male)	Cable Gland Connection Size(Female)
K-KHJ	RC-RC Type Reducer	N-MS58 Brass with nickel plated Ss-AISI316L Stainless Steel A-Aluminium	2-Silicone O-ring	M16m-M16 x 1,5 M20m-M20 x 1,5 M20m-M20 x 1,5 ...	M12f-M12 x 1,5 M12f-M12 x 1,5 M16f-M16 x 1,5 ...

REDUCER SELECTION TABLE

Product Size	Product Code	Cable Gland Connection Size "IG"(F)	Thread length "GL" min. (mm)	H mm	SW mm
M16 x 1,5	KRCX2-M16m-M12f	M12 x 1,5	15	19	22
M20 x 1,5	KRCX2-M20m-M12f	M12 x 1,5	15	19	25
M20 x 1,5	KRCX2-M20m-M16f	M16 x 1,5	15	19	25
M25 x 1,5	KRCX2-M25m-M16f	M16 x 1,5	15	19	30
M25 x 1,5	KRCX2-M25m-M20f	M20 x 1,5	15	19	30
M32 x 1,5	KRCX2-M32m-M20f	M20 x 1,5	15	19	36
M32 x 1,5	KRCX2-M32m-M25f	M25 x 1,5	15	19	36
M40 x 1,5	KRCX2-M40m-M25f	M25 x 1,5	18	22	45
M40 x 1,5	KRCX2-M40m-M32f	M32 x 1,5	18	22	45
M50 x 1,5	KRCX2-M50m-M32f	M32 x 1,5	18	23	55
M50 x 1,5	KRCX2-M50m-M40f	M40 x 1,5	18	23	55
M63 x 1,5	KRCX2-M63m-M40f	M40 x 1,5	18	23	70
M63 x 1,5	KRCX2-M63m-M50f	M50 x 1,5	18	23	70
M75 x 1,5	KRCX2-M75m-M50f	M50 x 1,5	18	24	85
M75 x 1,5	KRCX2-M75m-M63f	M63 x 1,5	18	24	85
M90 x 1,5	KRCX2-M90m-M63f	M63 x 1,5	21	29	100
M90 x 1,5	KRCX2-M90m-M75f	M75 x 1,5	21	29	100
M110 x 1,5	KRCX2-M110m-M75f	M75 x 1,5	21	31	120
M110 x 1,5	KRCX2-M110m-M90f	M90 x 1,5	21	31	120

REDUCER



PRODUCT DEFINITION

K	RC	X	X	Xm	Xf
Brand	Series	Material Type	Seal type	Product Size(Male)	Cable Gland Connection Size(Female)
K-KHJ	RC-RC Type Reducer	N-MS58 Brass with nickel plated Ss-AISI316L Stainless Steel A-Aluminium	2-Silicone O-ring	N38m-NPT 3/8" N12m-NPT 1/2" N12m-NPT 1/2" ...	N14f-NPT 1/4" N14f-NPT 1/4" N38f-NPT 3/8" ...

REDUCER SELECTION TABLE

Product Size	Product Code	Cable Gland Connection Size "IG"(F)	Thread length "GL" min. (mm)	H mm	SW mm
NPT 3/8"	KRCX2-N38m-N14f	NPT 1/4"	15	19	22
NPT 1/2"	KRCX2-N12m-N14f	NPT 1/4"	15	19	25
NPT 1/2"	KRCX2-N12m-N38f	NPT 3/8"	15	19	25
NPT 3/4"	KRCX2-N34m-N38f	NPT 3/8"	15	19	30
NPT 3/4"	KRCX2-N34m-N12f	NPT 1/2"	15	19	30
NPT 1"	KRCX2-N100m-N12f	NPT 1/2"	15	19	36
NPT 1"	KRCX2-N100m-N34f	NPT 3/4"	15	19	36
NPT 1 1/4"	KRCX2-N114m-N12f	NPT 1/2"	18	22	45
NPT 1 1/4"	KRCX2-N114m-N34f	NPT 3/4"	18	22	45
NPT 1 1/4"	KRCX2-N114m-N100f	NPT 1"	18	22	45
NPT 1 1/2"	KRCX2-N112m-N12f	NPT 1/2"	18	23	55
NPT 1 1/2"	KRCX2-N112m-N34f	NPT 3/4"	18	23	55
NPT 1 1/2"	KRCX2-N112m-N100f	NPT 1"	18	23	55
NPT 1 1/2"	KRCX2-N112m-N114f	NPT 1 1/4"	18	23	55
NPT 2"	KRCX2-N200m-N114f	NPT 1 1/4"	18	23	65
NPT 2"	KRCX2-N200m-N112f	NPT 1 1/2"	18	23	65
NPT 2 1/2"	KRCX2-N212m-N112f	NPT 1 1/2"	28	34	75
NPT 2 1/2"	KRCX2-N212m-N200f	NPT 2"	28	34	75
NPT 3"	KRCX2-N300m-N200f	NPT 2"	28	36	95
NPT 3"	KRCX2-N300m-N212f	NPT 2 1/2"	28	36	95
NPT 4"	KRCX2-N400m-N212f	NPT 2 1/2"	28	38	120
NPT 4"	KRCX2-N400m-N300f	NPT 3"	28	38	120

Contact

SHENZHEN KHJ SEMICONDUCTOR LIGHTING CO., LTD.

Address: 4-5 Floor, Building 1,Chuangxin industrial park,Xintian community,Guanlan, Longhua new district, Shenzhen ,China.

Tel: +86-755-82949977

E-mail: khjledsales@khj.cn

Fax: +86-755-82949800

Web: www.khjled.com